

## Introduction

The Levolux Acoustic Stretched Fabric Walling systems offer a multitude of benefits to the Interior Designer. They are simple yet extremely effective aesthetic and acoustic solutions that can be used to enhance the appearance of a variety of environments.

Levolux offers a wide range of products to provide a complete acoustic solution to Designers of interiors from design, project management, manufacture through to installation.

Levolux Acoustic Stretched Fabric Walling systems are suitable and available for a diverse range of situations including schools, cinemas, meeting rooms, concert halls, lecture theatres, AV rooms and executive dining areas.

**Aesthetically pleasing** - The systems are available in a wide choice of fabrics and colours making them an ideal component of any design concept.

**Acoustic control** - The nature of the systems can radically improve acoustics wherever they are installed. Sound absorption by the stretched fabric walling is high and can be invaluable when installed in sound focused environments, for example, in recording studios.

**Flexibility** - Levolve Stretched Fabric Walling systems are renowned for their adaptability. The systems can be fitted to any shape or size of wall or ceiling and can facilitate the most unusual of room layouts, including curves, doorways, sliding walls and ceilings.

**Virtually maintenance free** - Fabric walling is durable and once installed has a very low maintenance factor. Levolve specialists are able to train in maintenance of the systems and in certain situations can provide on site assistance.

**Improving energy efficiency** - In addition to its aesthetic and acoustic qualities, the Levolve Stretched Fabric Walling systems can be used to assist insulation.

**Integration** - All wall and ceiling intrusions such as switches, light fittings and air diffusers together with picture blocking and picture rails can be incorporated into the system.

**Fire rating** - All systems can be fire rated to BS476 class O dependent upon the covering fabric.

**Levolux Novawall** - Offers a stretched acoustic fabric walling system that is site built. Technically superior to other products, Novawall offers a wide range of extruded profiles in many sizes that produce clean joint lines and crisp edges while gripping the fabric tightly to ensure it does not sag or distort.

Edge details can be either square, bevelled or even

radiused and perfect grid detailing can be achieved on inside and outside curves with patterned textiles or three-dimensional shapes.

The acoustic benefits of the system mean that noise levels are reduced or softened making it ideal, not just for foyers and meeting rooms, but auditoriums and installations where audio-visual, broadcast and communications equipment is in use. By the nature of its panelled construction fabrics can be easily removed from the system for servicing, cleaning or replacement.

For the Interior Designer, Novawall offers limitless opportunities since Levolve holds an extensive database of suitable fabrics while also providing the opportunity to print graphics or images directly onto the fabric so that, for example, a company logo can be introduced.

**Levolux Avanti** (Acoustic hung panels) - The beauty of this system lies in the off-site manufacture. A wide range of cost effective panels are available. These are factory manufactured and installed onto site prefabricated making it ideal for fast track programmes.

The Levolve Avanti system ensures that installation is quick, easy and clean and presents minimal disturbance to the day-to-day workings of the site. Panels can be mechanically mounted using 'Z' bars, Velcro, magnetic strip or even directly fixed.

The Avanti panels are manufactured using an MDF framing around a glass fibre core.

**Levolux Premier** - A concealed, tackless stretched fabric as an Architectural feature, as well as an acoustic controller, using 12, 18, 25 and 50mm MDF as a standard framework with a glass fibre infill.

The system is generally site-built, however, some parts can be part pre-fabricated to reduce on site time.

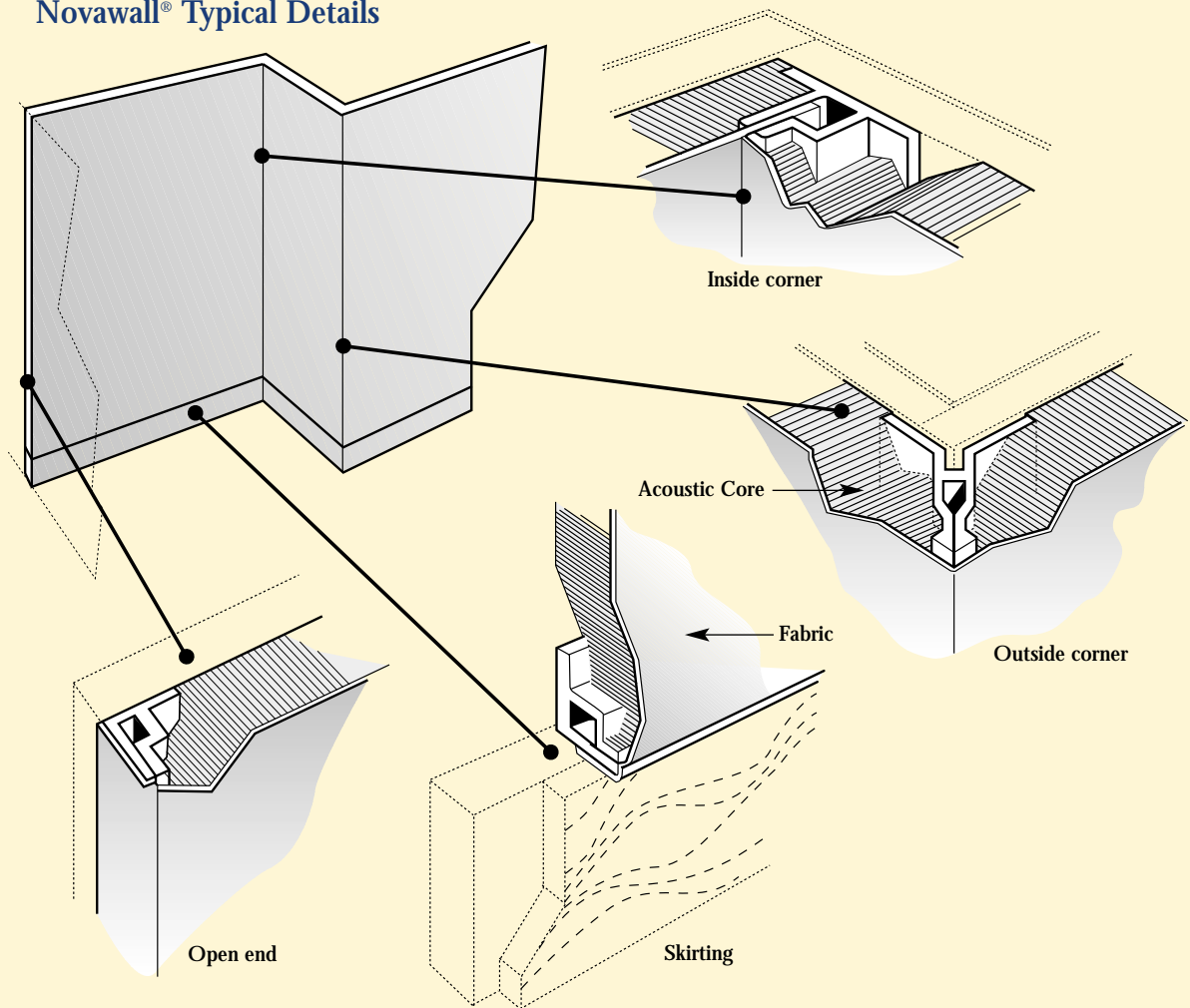
Levolux Premier can meet most design and performance requirements by using different thickness' and types of core materials. Fabrics can be 'railroaded', particularly on curved walls and can create a monolithic effect by having a sewn seam.

Because of its 'on-site' nature there are many Butt, edge, corner head and base details to satisfy the most demanding Designer requirements.

All Levolve systems are made of a high grade material to exacting specifications. This enables us to offer a guarantee providing free of charge replacement parts should any system prove defective within 3 years of installation. This guarantee is conditional on manufacturer's recommended fitting, operating and maintenance instructions having been followed.

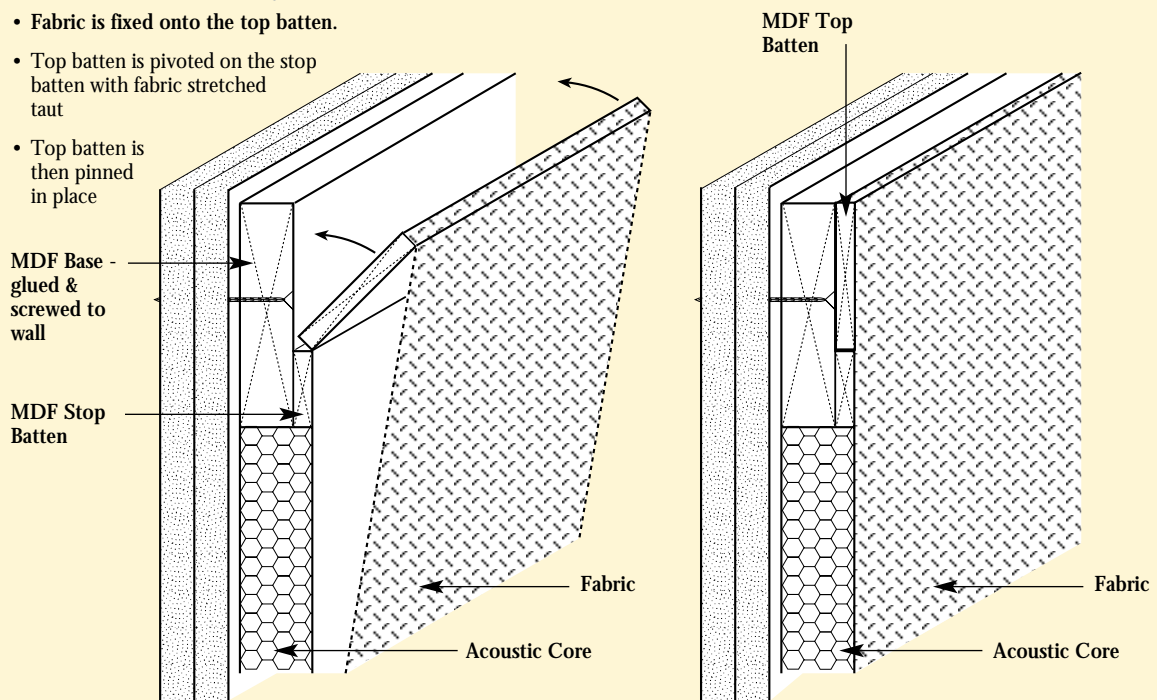


## Novawall® Typical Details

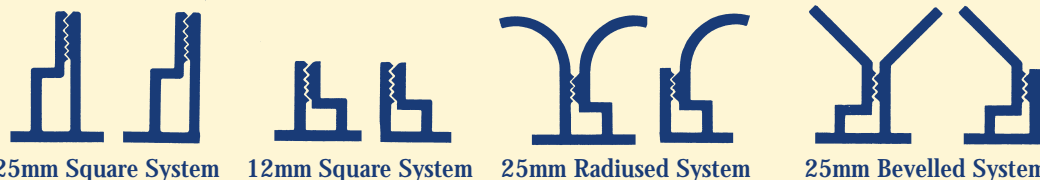


## Premier Site Built System

- Fabric is fixed onto the top batten.
- Top batten is pivoted on the stop batten with fabric stretched taut
- Top batten is then pinned in place



## Novawall Standard Components



## Specification

### Novawall System

Site-fabricated stretched fabric panel system shall consist of continuous perimeter and midwall mounting channels applied directly to substrate.

Facing fabric shall be stretched over core materials, leaving fabric floating above core surface.

System shall allow for removal and replacement of fabric facing from individual panels.

Removal of fabric shall allow access to surface behind fabric, without dismantling, removal or replacement of mounting channels or core.

Exposed mounting channels shall not be visible.

**Framing materials:** Extruded polymer channels. Mounting channels of profiles required to conform to edge detail indicated below.

**Core materials:** Acoustical – (12mm fibreglass; 96kg/m<sup>3</sup> density) (25mm fibreglass; 96kg/m<sup>3</sup> density) (25mm fibreglass; 48kg/m<sup>3</sup> density). Tackable/High Impact Fibreboard.

**Fabric Facing:** Fabrics selected by Architect and approved for use with application by manufacturer.

**Mounting Hardware:** Manufacturer standard fasteners for securing framing channels directly to gypsum board, wood or plywood substrates.

### Premier System

Site built, high tension, concealed, tackless stretched fabric timber frame system for walls and ceilings.

Consisting of perimeter and midwall timber mounting battens directly fixed to substrate. Fabric to be mechanically fastened under tension to site installed perimeter frame, using sterile fixings.

Fabric shall be installed as monolithic appearance with mid seams, seamless or butt jointed as required.

The core material shall be glassfibre, tackable mineral board or other materials as specified.

Screen fabrics selected by Architect and approved for use by Levolux.

### Avanti System

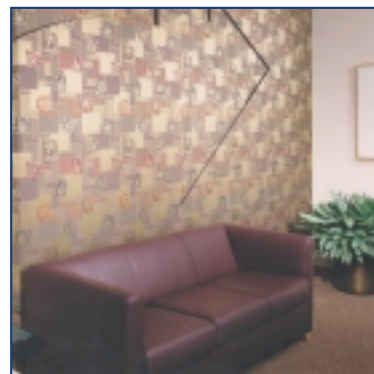
Prefabricated high tension fabric acoustic panel system for walls and ceilings.

Consisting of a timber frame with core material of glassfibre, tackable mineral board or other approved material.

Fabric shall be mechanically fixed under tension to perimeter frame of panel.

System can be demountable or fixed directly to substrate.

In line with the policy of continuous product development Levolux reserves the right to alter specifications without prior notice.



For further information on Levolux sunscreening systems and effective ways to control light, heat and glare please contact:

Levolux Limited  
Forward Drive, Harrow,  
Middlesex HA3 8NT,  
United Kingdom  
Telephone: (+44) 020 8863 9111  
Facsimile: (+44) 020 8863 8760  
www.levolux.com  
info@levolux.com



Levolux A.T. Limited  
24 Eastville Close, Eastern Avenue,  
Gloucester GL4 3SJ  
United Kingdom  
Telephone: (+44) 01452 500007  
Facsimile: (+44) 01452 527496  
www.levolux.com  
info@levolux.com