



Introduction

A system of British design and manufacture. An efficient, simple and effective weather ventilation louvre that has at last achieved the combination of airflow and weatherability without compromise that has eluded other louvre manufacturers over the last 25 years.

Its all aluminium construction and unique clipping system remove the possibility of a bi-metallic reaction and "staining" on building façades.

Features & Benefits

Aesthetically pleasing – the contoured aerodynamic shape with inherent strength capability has a distinctive profile, whilst still retaining a continuous appearance.

Virtually maintenance free - its unique patent pending all aluminium louvre to mullion clip assembly and A4 stainless steel fasteners, ensures eradication of any bi-metallic reaction.

Reduces energy costs - as the blade is aerodynamically efficient, it has the best coefficient of discharge on the market for an extruded blade, and is more effective than even the well-known roll formed version. With air resistance being reduced through the louvre, it allows the aperture and plant equipment to be smaller so saving capital outlay and running costs.

Flexibility - the system is designed to be fitted with the maximum flexibility utilising stainless steel M8 fixings/fasteners for use with stainless steel universal fixing brackets. This combined with the high strength of the blade allows easy and quick installation with large tolerance capacity within the aperture.

Performance - the system has the most aerodynamically efficient louvres available on the present market with an extremely impressive free area (maximum incidence). It is also remarkably weather efficient together with the coefficient of discharge which, until now, was thought to be impossible. The aperture for air intake is smaller and accordingly the amount of water entering the system is less than any other single blade, with a similar coefficient of discharge. Indeed the 50mm Contour blade is better than some manufacturers double bank systems.

The Range

Our standard louvres are shown on the opposite page and their design parameters are on the back page. The louvres can be used as a solar control feature. Acoustic

louvres are also available to meet the various building requirements, they help reduce sounds that are directly admitted into the building as well sounds that are reflected and airborne. For areas where a high degree of weatherability is required our 'sandtrap' louvres are available.

The range of accessories for the louvres include insect mesh, doors, flashings, backing and insulation panels.

Finishes - Are available anodised, mill finish or powder coated to any RAL colour.

System Construction

- Mullions • Louvres • Clipping System
- Fixing Brackets • Flashing

• **Mullions** - the mullions are fixed back to Levolux stainless steel adjustable brackets at around 1200mm centres. There are four different types of mullion available. The strap mullion, standard mullion and a deeper high span mullion which allows the louvre system to span greater heights in many cases eliminating the need for secondary steelwork. The 'box' mullion is particularly suitable for corner details.

• **Louvres** - the aluminium extrusions are important in that they create crisp lines and can be made into complex shapes required for a good louvre system.

• **Clips** - the unique all aluminium tension clip system has the clip fitted into the slots and locked under the clip above. Once positioned the clip becomes fixed. Only one mechanical clip to mullion is required.

• **Fixing Brackets** - stainless steel fixing brackets with slotted holes to overcome small tolerances, both horizontally and vertically.

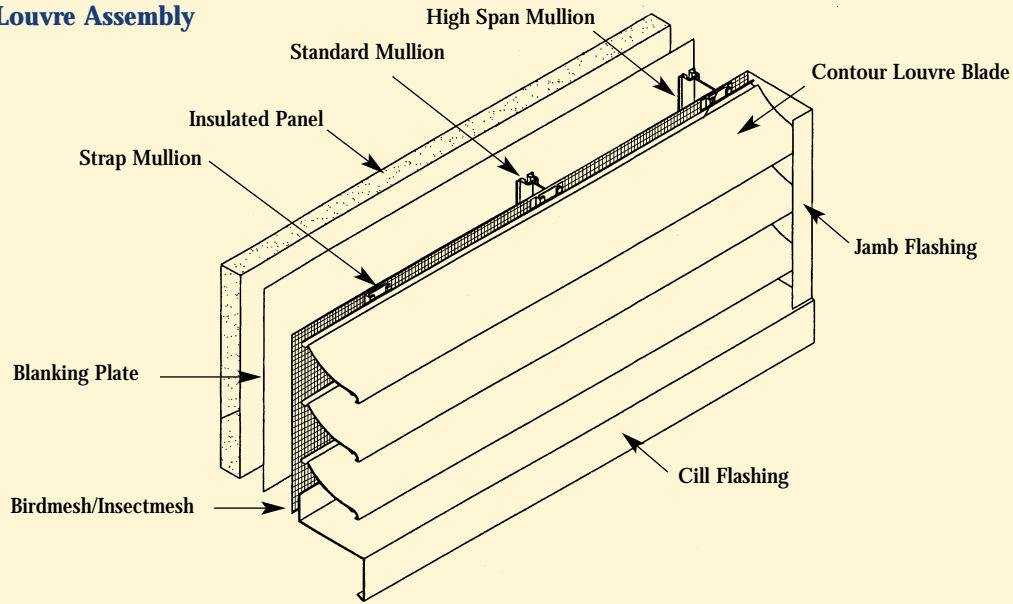
• **Flashing** - fabricated aluminium flashings formed to encase the louvre system and form a weather seal around the perimeter of the louvre.

3 Year Warranty

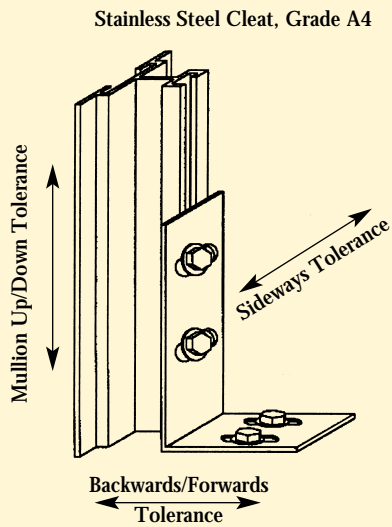
All Levolux systems are made of a high grade material to exacting specifications. This enables us to offer a guarantee providing free of charge replacement parts should any system prove defective within 3 years of installation. This guarantee is conditional on manufacturer's recommended fitting, operating and maintenance instructions having been followed.



Vent Louvre Assembly

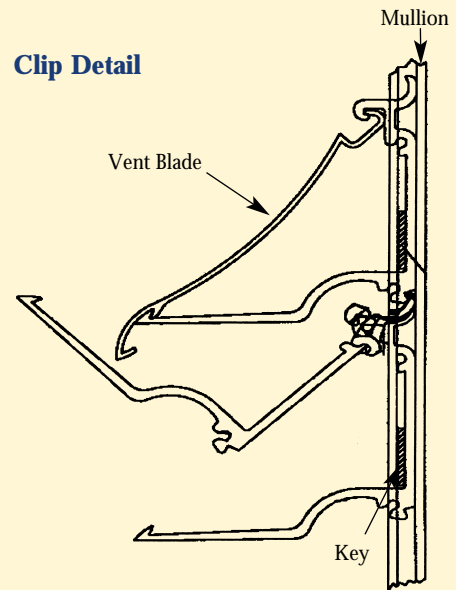


Mullion/Cleat Detail

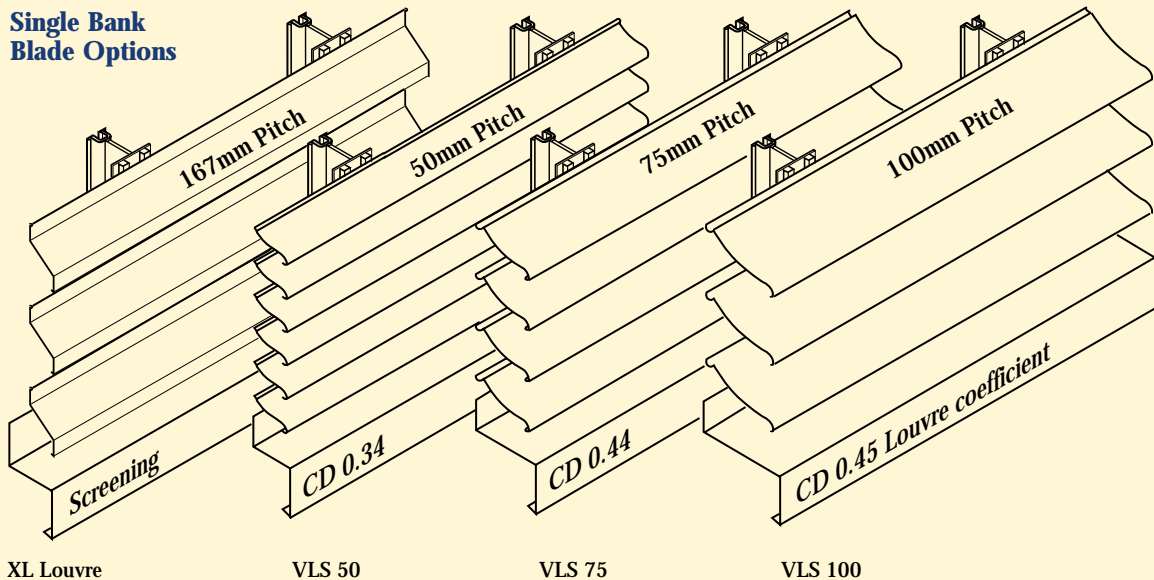


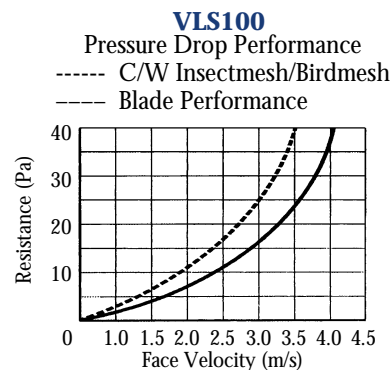
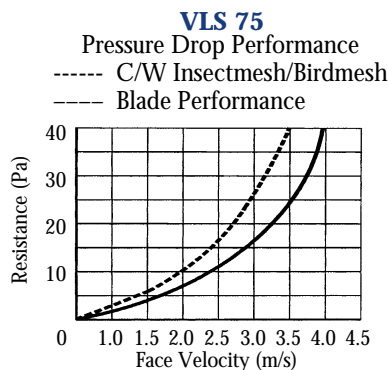
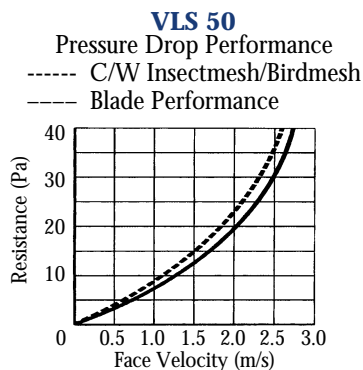
- Clip fits into slot and locks under clip above.
- Key fitted to base by twisting aluminium key loosely into position.
- When next clip positioned and rotated down with rotary motion the clip puts the key and itself under tension.
- When two or more clips are built up in this fashion they become fixed

Clip Detail



Single Bank Blade Options





General Description

Louvres - High performance vent louvre with hidden fixing for continuous appearance. All clip to blade and clip to mullion fixings to be aluminium alloy 6063 T6 to prevent possible bi-metallic reaction. Weatherability classification nomenclature (from results obtained from the Building Services Research and Information Association) should be as follows below.

Doors - High quality extruded aluminium door designed with bespoke extrusions especially for the purpose of louvres. Hinge type and lock may be specified to suit exact customer requirement. Standard ironmongery Euro-profile mortice deadlock complete with single cylinder and escutcheons, handles integral with the aluminium frame.

Limiting Core Velocity

Pitch	50mm	75mm	100mm
0 m/s Vent	A2	B2	C2
1 m/s Vent	B2	B2	C2
2 m/s Vent	C2	C2	C2

Specification

High performance vent louvre blade. Extruded aluminium profile aerodynamically designed to provide minimum resistance to air passage whilst retaining a high degree of weatherability and also incorporating high inherent strength characteristics. High performance vent louvre door using extruded aluminium profile designed to allow maximum flexibility both for build and blade type permutations. Aluminium Extrusion to BS 1474, Alloy to BS 6063 T6. Blade Pitch to be 50/75/100mm with angle varying to provide optimum performance and free area of 66/80/84% respectively (maximum incidence).

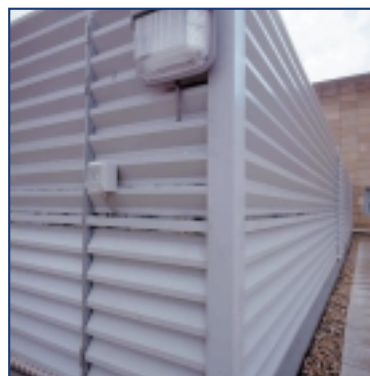
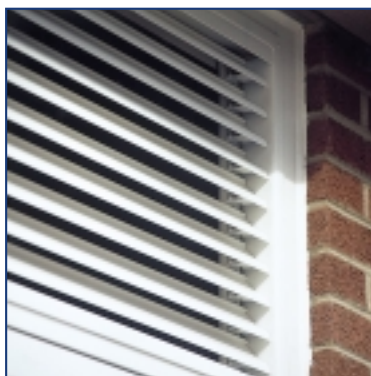
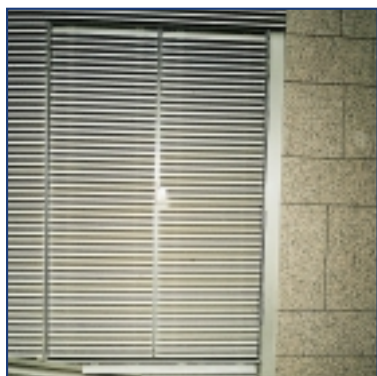
Finish - Polyester Powder Coated
Anodising to BS 3987 - AA25
Other finishes are also possible such as PVF2, please enquire.

Backing - Birdmesh/Insectmesh
Blanking Plate
Insulated blanking plate

Fixings - Stainless steel to a minimum A2 grade

CD 100 - 0.45
75 - 0.44
50 - 0.34

In line with the policy of continuous product development Levolux reserves the right to alter specifications without prior notice.



For further information on Levolux ventilation louvres and our wide range of sunscreening systems to control light, heat and glare please contact:

Levolux Limited
Forward Drive, Harrow,
Middlesex HA3 8NT,
United Kingdom
Telephone: (+44) 020 8863 9111
Facsimile: (+44) 020 8863 8760
www.levolux.com
info@levolux.com



Levolux A.T. Limited
24 Eastville Close, Eastern Avenue,
Gloucester GL4 3SJ
United Kingdom
Telephone: (+44) 01452 500007
Facsimile: (+44) 01452 527496
www.levolux.com
info@levolux.com