

Design LINES

ISSUE No.12

THE LATEST NEWSLETTER FROM THE UK'S LEADING SOLAR SHADING SPECIALIST

FEATURING

HML HQ, Skipton • Loughborough SportPark
Central St Giles, London • The St Botolph Building, London • Derby University
Lea Manor High School, Luton • 40 Bank Street, London

Levolux helps HML to protect its assets.

Locally based, Bowman Riley Architects, created an ambitious design, incorporating a raft of energy saving features. These include rainwater harvesting, solar hot water panels and a revolutionary Solar Shading System from Levolux that actually generates its own electricity.



- Levolux designed, fabricated, installed and commissioned a bespoke Solar Shading solution, incorporating 210 horizontal motorised Glass Fins.
- Each Glass Fin is laminated, with two layers of clear glass sandwiching an inter layer which includes mono-crystalline photovoltaic cells.
- The underside of each Glass Fin has been screen printed with a silver dot matrix effect, creating an attractive opaque finish.
- The motorised Glass Fins are linked to a stand-alone controller, which automatically rotates them, following the movement of the sun for effective shading, allowing the photovoltaic cells to operate efficiently, contributing 11kWp of renewable electricity.
- Levolux also installed 347 individual, manually operated 760SX Internal Roller Blinds to control light and glare levels on each floor.



Paul Hodgson from Bowman Riley Architects, was very pleased with the completed project and with the contribution from Levolux, commenting: "With the help of Levolux and the application of their Solar Shading solution, the new HML headquarters development successfully balances the need for efficiency, quality and aesthetic appeal."



LEVOLUX
DESIGNED TO CONTROL
www.levolux.com



Levolux takes the lead at “SportPark.”

Levolux developed a custom aluminium Solar Shading solution for Loughborough University’s “SportPark” development, incorporating giant Perforated Sails and Aerofoil Fins, applied externally.



- Levolux installed 12 giant Perforated Aluminium Sails, measuring 2650mm wide and ranging in height from just over 6 metres to an impressive 12.6 metres.
- Single skin, curved perforated aluminium sheets are incorporated into a bespoke frame, which is secured to the building at approx 1500mm centres.
- Levolux also installed its extruded aluminium Aerofoil Fins, measuring 150mm wide, horizontally with a projection of 1000mm. The Fins are also incorporated into a vertical stack measuring 3 metres wide and 13 metres high.



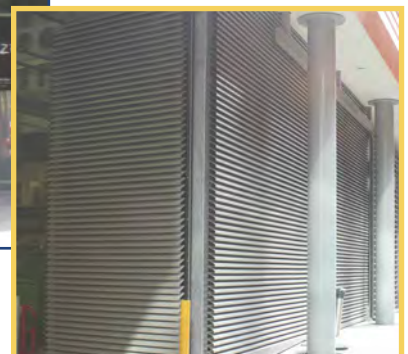
Michael Friel, Project Architect at David Morley Architects was impressed with Levolux’s contribution on the project, commenting: “The Solar Shading system installed by Levolux exceeds our expectations, in terms of its aesthetic appearance, the quality of workmanship and its effectiveness in reducing solar heat gain inside the building.”

Levolux delivers at Central St Giles.

When acclaimed architect, Renzo Piano designed Central St Giles, a mixed use, multi-storey development in central London, he created a bold scheme, including a custom arrangement of Levolux Louvres and Blinds,



- A custom aluminium motorised sliding gate, measuring 9.4 metres wide by 5.3 metres high, provides secure access to the underground car park. The gate features an intelligent control system for continued safe operation.
- Two pairs of Louvred loading bay doors are designed to swing back and fold neatly away. Each door measures an impressive 7.6 metres wide by 5 metres high.
- Custom ‘Z’ profile Louvres with an 80mm pitch have been applied extensively to the commercial block.
- In contrast, brightly coloured ‘Z’ profile, steel Louvres with a 50mm pitch have been applied to the residential block.
- In addition, 2891 High Performance Roller Blinds have been installed internally to help control light and glare levels.



Levolux shines a light at The St Botolph Building.

The design of The St Botolph Building development in the City of London, pushes the boundaries of contemporary architecture, including the internal application of vertical illuminated Louvres from Levolux.



- Custom 'H-section' profile extruded aluminium Louvres, measuring 185mm deep and 40mm wide, have been applied to the double height reception and adjoining circulation areas.
- In total Levolux installed 1750 vertical Louvres to clad the walls and to form a balustrade, running alongside eight escalators.
- To achieve an ultra-modern aesthetic, LED lighting has been fitted at the top and bottom of each Louvre and the custom extrusions incorporate a serrated diffuser; which effectively distributes light from floor to ceiling.



Andrew Byrne, Grimshaw Associate in charge of the project: "We really appreciated Levolux's collaborative approach during the design stages of this scheme. Their enthusiastic attitude towards the project led to stunning results."

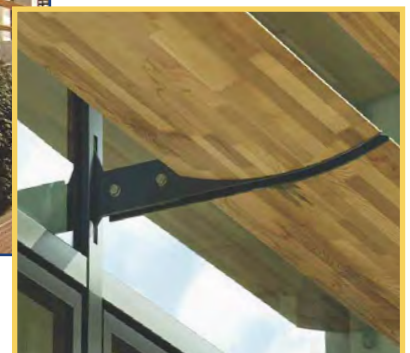
Levolux's cool look for iconic Derby Tower.

Levolux was invited to help improve the energy efficiency and internal comfort levels of the University of Derby's Kedleston Road site, with the application of an attractive Timber Fin Solar Shading System.



- Four rows of 450mm wide by 80mm deep, external Timber Fins were installed horizontally along the building's south east and south west elevations, at a fixed angle of 90°.
- Levolux secured the Timber Fins to the structure using its unique Triniti® Bracket.
- It is the only known patented bracket to have an integrated thermal and acoustic break and has been proven to be 70% more effective at reducing heat loss, than conventional curtain walling brackets.*

*Results of independent tests carried out by the Centre for Window and Cladding Technology (CWCT) at Bath University.



Levolux solution brightens up Luton school.

Lea Manor High School benefits from a stunning Levolux Solar Shading solution. Levolux devised an external aluminium Solar Shading solution, utilising its new Infiniti® Fin System.



- 13 rows of 300mm wide horizontal Aerofoil Fins were applied in a vertical stack across the entrance of the school.
- Each Aerofoil Fin has been given a distinctive coloured powder coated finish, ranging from reds and yellows, to greens and blues.
- The Infiniti Fin System is an innovative form of external Solar Shading, its unique concealed fixings create attractive aesthetic continuous Fins.
- The system can accommodate aerofoil, diamond, oval, rectangular and box section Fins, in widths ranging from 150mm to 600mm.

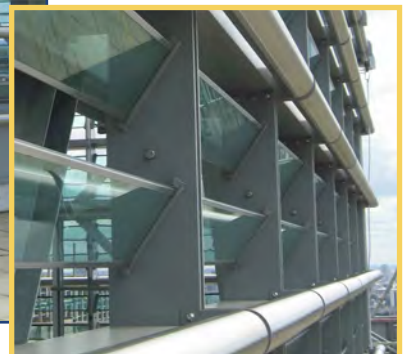


Levolux goes sky high at Canary Wharf.

40 Bank Street in London's Canary Wharf, a 33 storey building, has a new Levolux Glass Fin Roof Enclosure, creating a sleek appearance that can be seen for miles around.



- The bespoke screening solution comprises 336 Glass Fins and an attractive stainless steel and aluminium frame that reaches 6 metres in height.
- The Glass Fins were laminated with a cool blue tint finish and the frame was finished with a light grey powder coating.
- The Glass Fin System is an effective form of Solar Shading and offers a highly attractive method of creating a ventilated enclosure, behind which plant and equipment can operate efficiently.



London/SE England

Levolux Limited, Forward Drive, Harrow,
Middlesex HA3 8NT
T: 020 8863 9111

Rest of UK & International

Levolux AT Limited, 24 Eastville Close,
Eastern Avenue, Gloucester GL4 3SJ
T: 01452 500007