



Introduction

The Levolux Matrix XL System is of British design and manufacture, uniting simplicity and efficiency to produce an effective external "Brise Soleil" suncreening system.

The system can create both aesthetic and structural features enhancing the external appearance of new and existing buildings, whilst reducing the solar heat gain entering them.

Features & Benefits

Aesthetically pleasing - Matrix XL is manufactured from extruded aluminium components and can be anodised or polyester powder coated to co-ordinate with the building and surroundings.

Virtually maintenance free - Stainless steel fastenings and fixings are used, producing a virtually maintenance-free and corrosion-resistant system.

Reduces energy costs - The ability to limit solar heat gain can reduce or even eliminate the need for air conditioning.

Comfortable environment - Matrix XL encourages natural ventilation and provides unobstructed outward vision.

Flexibility - Matrix XL can be fitted to existing and new buildings, and allows special applications to be considered.

Accessibility - Using Matrix XL with walk way option gives easier maintenance, such as window cleaning, and access.

Multi-purpose - Matrix XL may even be used for wall cladding, ventilation grilles, sight screening, pergolas, pedestrian ways, sun terraces etc.

The Range

Standard - 'Z' louvres are usually fitted below the support arms in a continuous design (6m maximum louvre length). By using other standard support arm options louvres can also be fitted between and above. With support arms at maximum 2.250m centres most window glazing mullions can be followed - see size parameters on reverse.

Structural - When there is a need to span greater than 2.250m between support arms the structural XL blade system can be used, accommodating up to 3m width.

Walk-on Matrix XL - Offering the unique facility of providing a maintenance platform as well as an effective sunscreen.

This solution is particularly suited to taller buildings where "shading shelves" may be created by traditional brise soleil. The system incorporates a J-tread element with a serrated top to form a platform adjacent to the louvres without affecting their efficiency. A latch-way safety system can be fixed to the face of the building or a handrail can be incorporated into the overall design.

Bespoke Solutions - Our auto-cad trained product designers and structural engineers are able to develop special solutions. If your 'dream designs' are to become reality we can do it for you.

By mixing the benefits of extruded aluminium components and the structural integrity of steel, we can achieve 7.2m fixing centres. Multi-tiered designs incorporating structural brackets fixed to concrete or structural steel to retain a curtain walling façade which can also provide a walk-on system.

System Construction

All components are subject to rigid quality standards and are designed to produce a high performance product with an aesthetically pleasing finish. The main components of a Levolux Matrix XL system are:

- 1st fix brackets
- Support arms
- Louvres
- J treads
- Braces

1st fix brackets can be either steel or extruded aluminium dependant on each application and building needs.

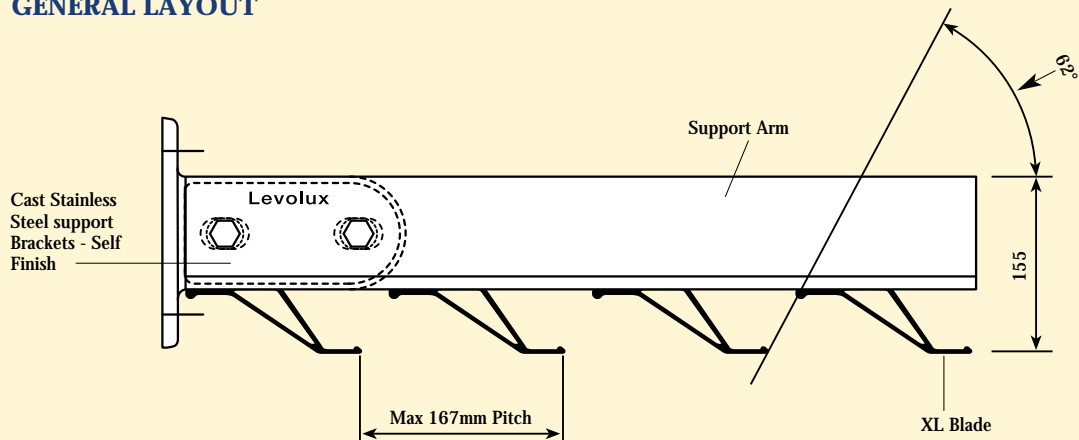
Other components are generally extruded aluminium sections but can also vary with individual building requirements.

3 Year Warranty

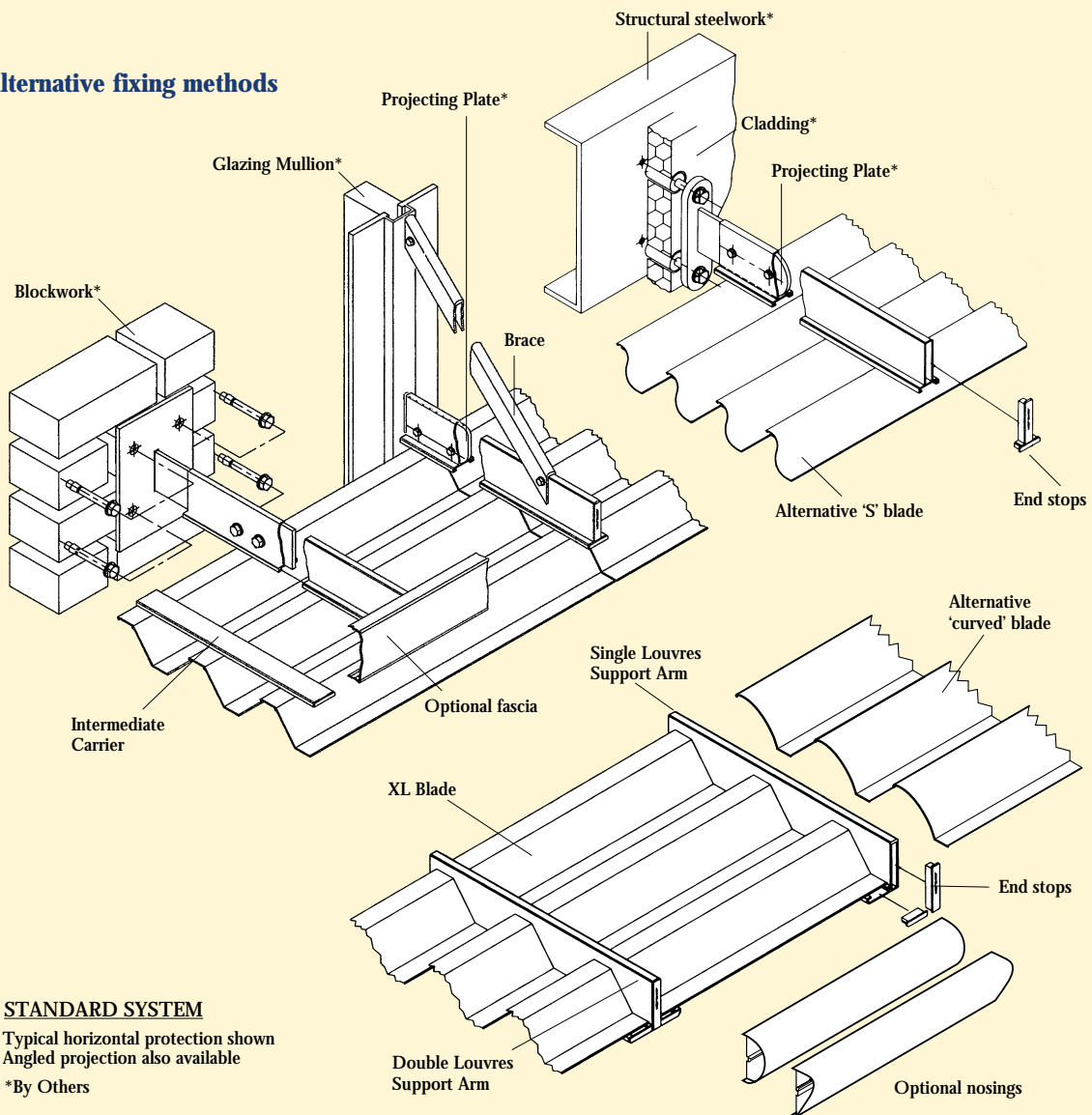
All Levolux systems are made of a high grade material to exacting specifications. This enables us to offer a guarantee providing free of charge replacement parts should any system prove defective within 3 years of installation. This guarantee is conditional on manufacturer's recommended fitting, operating and maintenance instructions having been followed.



GENERAL LAYOUT



Alternative fixing methods



STANDARD SYSTEM

Typical horizontal projection shown
Angled projection also available

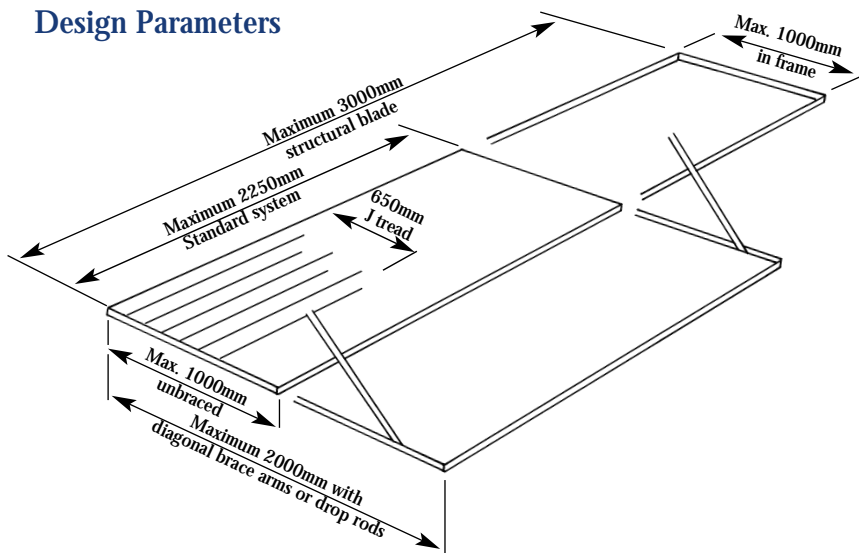
*By Others

Design Parameters

Levolux walk-on Brise Soleil is designed to support a 1Kn point load at 1000mm CRS with support arms spaced at 1800mm (Equivalent to maintenance use by two 89Kg personnel). The system is manufactured from extruded aluminium components to B.S. 1474, Grade 6063 and stainless steel fixings, Grade A2. Standard finishes; Natural Anodised, Polyester Powder Coat and PVF2 - others available on request.



Design Parameters



Sizes indicated are the maximum for standard applications.

Advice should be sought from your Levolux distributor before proceeding with any project even when using standard products as local conditions could affect the final system design.

Sizes can sometimes be exceeded with the incorporation of special details to cope with specific building requirements.

Specification

Item: MATRIX XL

Fixed matrix system to be Levolux Matrix XL in natural anodised/ powder coated* finish from Levolux range.

Colour ref. RAL/BS.....#.

System to be of extruded aluminium components grade AA 6063 TF using stainless steel fastenings.

Louvres to be of 'Z' form with 90mm diagonal face attached via extruded aluminium clips to standard support arms.

Standard/bespoke/cladding bracket supports.

Support arms finished with end cap of standard colour.

Width= Projection=

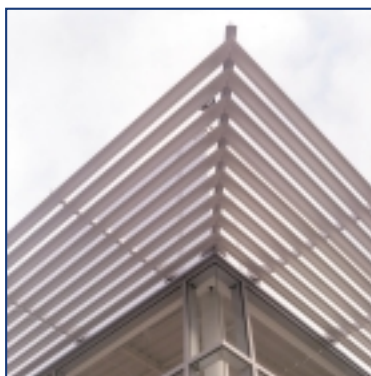
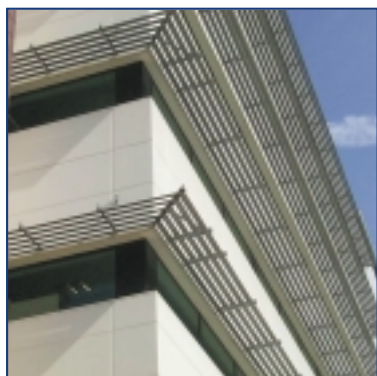
System to be cantilever/angled/in-frame braced/unbraced* design.

Supplied and installed by an approved Levolux distributor.

Insert as applicable

* Delete as applicable

In line with the policy of continuous product development Levolux reserves the right to alter specifications without prior notice.



For further information on Levolux sunscreening systems and effective ways to control light, heat and glare please contact:

Levolux Limited
Forward Drive, Harrow,
Middlesex HA3 8NT.
United Kingdom
Telephone: (+44) 020 8863 9111
Facsimile: (+44) 020 8863 8760
www.levolux.com
info@levolux.com



Levolux A.T. Limited
24 Eastville Close, Eastern Avenue,
Gloucester GL4 3SJ
United Kingdom
Telephone: (+44) 01452 500007
Facsimile: (+44) 01452 527496
www.levolux.com
info@levolux.com